

A photograph of a stone tomb entrance. The stone is rough and textured, with a dark, shadowed opening. Inside the opening, a rolled-up yellowish cloth is visible. The word "BELIEVE!" is written in large, white, serif capital letters across the top of the opening. Below it, the words "THE GOSPEL OF JOHN" are written in smaller, white, serif capital letters.

BELIEVE!

THE GOSPEL OF JOHN

**He Must Increase...**

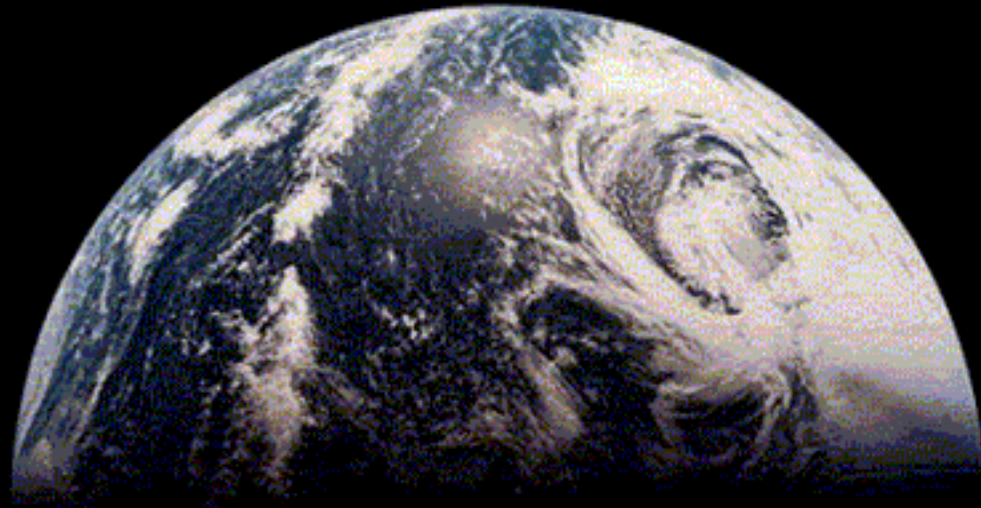
**John 3:22-30**



**In the beginning...**



**...was the Word**





**Word became flesh...**



**I Realize my gifts  
are from God!**



**I see myself as  
the friend of the  
Groom!**



**I find my joy in  
the Grooms JOY!**





**I am willing to  
be less for Jesus!**



- Listen to Hebrews 11:35-38
- *How much...*
- *Will you be satisfied?*



A photograph of a stone tomb entrance. The stone is rough and textured, with a dark, shadowed opening. Inside the opening, a rolled-up yellowish cloth is visible. The word "BELIEVE!" is written in large, white, serif capital letters across the top of the opening. Below it, the words "THE GOSPEL OF JOHN" are written in smaller, white, serif capital letters.

BELIEVE!

THE GOSPEL OF JOHN